



Maplin Close, London

£550,000

Havilands

the advantage of experience



- 3 bed top floor apartment
- Shared Roof terrace and communal gardens
- Large garage
- Newly refurbished throughout
- Close to popular schools
- Lift
- New double glazing throughout

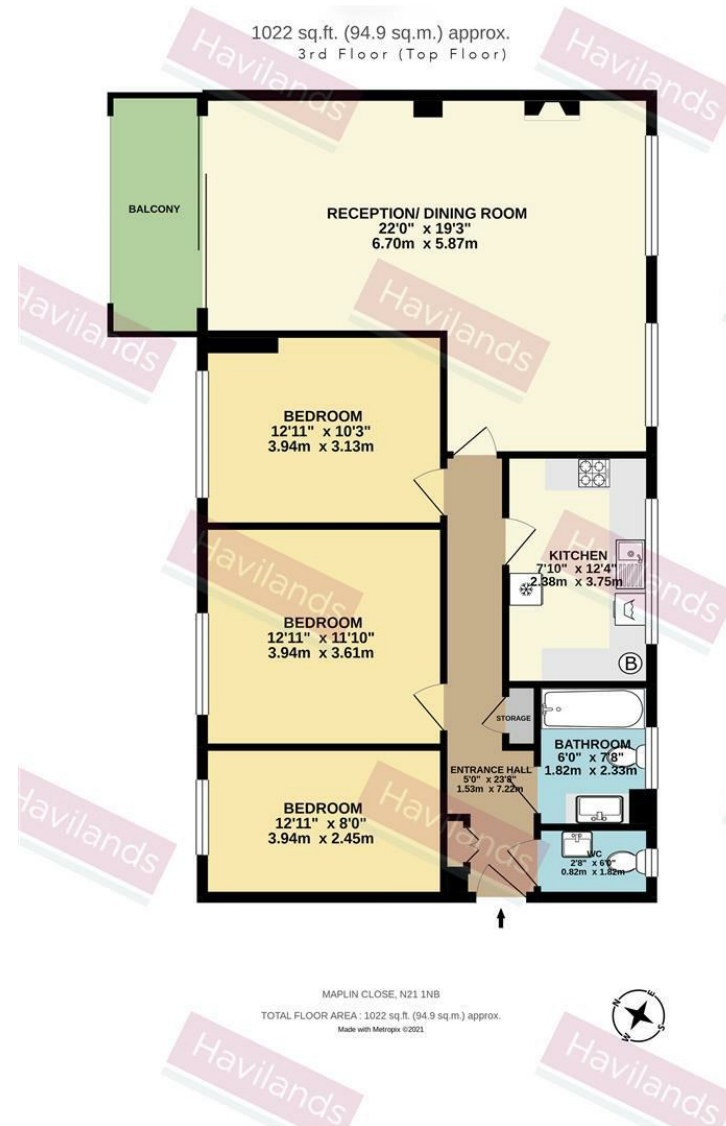


For more images of this property please visit havilands.co.uk



Havilands are delighted to present this newly refurbished 3 bedroom, 3rd floor (top) spacious apartment complete with roof terrace (shared with 1 other flat), lift, large garage, communal gardens and balcony. The L shaped lounge/diner offers a spacious living area with a balcony on one side and 2 windows on the other, making it a light and airy space. The kitchen is fully fitted and has views over London. There are 3 good sized bedrooms, family bathroom and separate WC. Outside this property benefits from a large garage, attractive communal gardens and spacious roof terrace. New double glazed windows were recently fitted throughout. This apartment is within walking distance to some of the best primary/junior and secondary schools in N21. Viewing highly recommended

For more images of this property please visit havilands.co.uk



havilands | 020 8886 6262
come by and meet the team
30 The Green, Winchmore Hill, London, N21 1AY